



Tobia Longarini  
HIGH FASHION SHOES





## LANCILLOTTO - Art. T179N

Exclusive model owned by the company Tobia Longarini. Protected brand worldwide.

### LEATHER:

FIRST CHOICE CALF WITH ANILINE WHICH CONVEYS A SOFT-FEEL TEXTURE

### LINING:

NATURAL CALF

### INNER INSOLE:

COVERED IN NATURAL CALF

### LOGO:

EMBROIDERED

### SOLE:

LEATHER WITH LASERED POETRY AND INJECTED RUBBER

### COLOR:

BLACK

### NUMBERS:

37-38-39-40-41-42-43-44-44-45-46-47

### LEATHER CARE INSTRUCTIONS:

IT ABSORBS OINTMENTS AND IT IS BRUSHABLE

NEW





## LANCILLOTTO - Art. T179C

Exclusive model owned by the company Tobia Longarini. Protected brand worldwide.

### LEATHER:

FIRST CHOICE CALF WITH ANILINE WHICH CONVEYS A SOFT-FEEL TEXTURE

### LINING:

NATURAL CALF

### INNER INSOLE:

COVERED IN NATURAL CALF

### LOGO:

EMBROIDERED

### SOLE:

LEATHER WITH LASERED POETRY AND INJECTED RUBBER

### COLOR:

COFFEE

### NUMBERS:

37-38-39-40-41-42-43-44-44-45-46-47

### LEATHER CARE INSTRUCTIONS:

IT ABSORBS OINTMENTS AND IT IS BRUSHABLE

NEW





## **LANCILLOTTO - Art. L90K**

Exclusive model owned by the company Tobia Longarini. Protected brand worldwide.

### **LEATHER:**

FIRST CHOICE CALF WITH ANILINE WHICH CONVEYS A SOFT-FEEL TEXTURE

### **LINING:**

NATURAL CALF

### **INNER INSOLE:**

COVERED IN NATURAL CALF

### **LOGO:**

IN HIGH FREQUENCY

### **SOLE:**

HIGH QUALITY BLACK RUBBER SOLE WHICH ALLOWS  
THE USE OF THE SHOES AT VERY LOW TEMPERATURES

### **COLOR:**

BLACK

### **NUMBERS:**

37-38-39-40-41-42-43-44-44-45-46-47

### **LEATHER CARE INSTRUCTIONS:**

IT ABSORBS OINTMENTS AND IT IS BRUSHABLE



### **OPTIONAL:**

INSIDE PART IN SHEEPSKIN







## **LANCILLOTTO - Art. S201**

Exclusive model owned by the company Tobia Longarini. Protected brand worldwide.

**LEATHER:**

FIRST CHOICE CALF WITH ANILINE WHICH CONVEYS A SOFT-FEEL TEXTURE

**LINING:**

NATURAL CALF

**INNER INSOLE:**

COVERED IN NATURAL CALF

**LOGO:**

EMBROIDERED

**SOLE:**

HIGH QUALITY BROWN RUBBER SOLE WHICH ALLOWS  
THE USE OF THE SHOES AT VERY LOW TEMPERATURES

**COLOR:**

COFFEE

**NUMBERS:**

37-38-39-40-41-42-43-44-44-45-46-47

**LEATHER CARE INSTRUCTIONS:**

IT ABSORBS OINTMENTS AND IT IS BRUSHABLE





## LANCILLOTTO - Art. T250

Exclusive model owned by the company Tobia Longarini. Protected brand worldwide.

**LEATHER:**

FIRST CHOICE CALF WITH ANILINE WHICH CONVEYS A SOFT-FEEL TEXTURE

**LINING:**

NATURAL CALF.

**INNER INSOLE:**

COVERED IN NATURAL CALF.

**LOGO:**

PUNCHED

**SOLE:**

LEATHER WITH LASERED POETRY AND INJECTED RUBBER

**COLOR:**

BLACK

**NUMBERS:**

37-38-39-40-41-42-43-44-44-45-46-47

**LEATHER CARE INSTRUCTIONS:**

IT ABSORBS OINTMENTS AND IT IS BRUSHABLE

NEW





## LANCILLOTTO - Art. L79C

Exclusive model owned by the company Tobia Longarini. Protected brand worldwide.

**LEATHER:**

FIRST CHOICE CALF WITH ANILINE WHICH CONVEYS A SOFT-FEEL TEXTURE

**LINING:**

NATURAL CALF

**INNER INSOLE:**

COVERED IN NATURAL CALF

**LOGO:**

IN HIGH FREQUENCY

**SOLE:**

LEATHER WITH LASERED POETRY AND INJECTED RUBBER

**COLOR:**

BLACK

**NUMBERS:**

37-38-39-40-41-42-43-44-44-45-46-47

**LEATHER CARE INSTRUCTIONS:**

IT ABSORBS OINTMENTS AND IT IS BRUSHABLE

NEW







## LANCILLOTTO - Art. L80C

Exclusive model owned by the company Tobia Longarini. Protected brand worldwide.

**LEATHER:**

FIRST CHOICE CALF WITH ANILINE WHICH CONVEYS A SOFT-FEEL TEXTURE

**LINING:**

NATURAL CALF

**INNER INSOLE:**

COVERED IN NATURAL CALF

**LOGO:**

IN HIGH FREQUENCY

**SOLE:**

LEATHER WITH LASERED POETRY AND INJECTED RUBBER

**COLOR:**

COFFEE

**NUMBERS:**

37-38-39-40-41-42-43-44-44-45-46-47

**LEATHER CARE INSTRUCTIONS:**

IT ABSORBS OINTMENTS AND IT IS BRUSHABLE

**NEW**







### **LANCILLOTTO - Art. L91K**

Exclusive model owned by the company Tobia Longarini. Protected brand worldwide.

**LEATHER:**

FIRST CHOICE CALF WITH ANILINE WHICH CONVEYS A SOFT-FEEL TEXTURE

**LINING:**

NATURAL CALF

**INNER INSOLE:**

COVERED IN NATURAL CALF

**LOGO:**

IN HIGH FREQUENCY

**SOLE:**

HIGH QUALITY BROWN RUBBER

**COLOR:**

COFFEE

**NUMBERS:**

37-38-39-40-41-42-43-44-44-45-46-47

**LEATHER CARE INSTRUCTIONS:**

IT ABSORBS OINTMENTS AND IT IS BRUSHABLE





## **LANCILLOTTO MIMETIC - Art. T251**

Exclusive model owned by the company Tobia Longarini. Protected brand worldwide.

**LEATHER:**

PONY

**LINING:**

NATURAL CALF.

**INNER INSOLE:**

COVERED IN NATURAL CALF.

**LOGO:**

PUNCHED

**SOLE:**

LEATHER WITH LASERED POETRY AND INJECTED RUBBER

**NUMBERS:**

37-38-39-40-41-42-43-44-44-45-46-47

**NEW**







## LANCILLOTTO MIMETIC - Art. T252T

Exclusive model owned by the company Tobia Longarini. Protected brand worldwide.

**LEATHER:**

PONY

**LINING:**

NATURAL CALF.

**INNER INSOLE:**

COVERED IN NATURAL CALF.

**LOGO:**

PUNCHED

**SOLE:**

LEATHER WITH LASERED POETRY AND INJECTED RUBBER

**NUMBERS:**

37-38-39-40-41-42-43-44-44-45-46-47

NEW





## LANCILLOTTO MIMETIC - Art. L253C

Exclusive model owned by the company Tobia Longarini. Protected brand worldwide.

**LEATHER:**

PONY

**LINING:**

NATURAL CALF

**INNER INSOLE:**

COVERED IN NATURAL CALF

**LOGO:**

IN HIGH FREQUENCY

**COLLAR:**

BROWN LEATHER

**SOLE:**

LEATHER WITH LASERED POETRY AND INJECTED RUBBER

**NUMBERS:**

37-38-39-40-41-42-43-44-44-45-46-47

NEW







### **LANCILLOTTO MIMETIC - Art. L254K**

Exclusive model owned by the company Tobia Longarini. Protected brand worldwide.

**LEATHER:**

PONY

**LINING:**

NATURAL CALF

**INNER INSOLE:**

COVERED IN NATURAL CALF

**LOGO:**

IN HIGH FREQUENCY

**COLLAR:**

BROWN LEATHER

**SOLE:**

HIGH QUALITY BROWN RUBBER

**NUMBERS:**

37-38-39-40-41-42-43-44-44-45-46-47





## LANCILLOTTO LOW - Art. LL256

Exclusive model owned by the company Tobia Longarini. Protected brand worldwide.

**LEATHER:**

HIGH QUALITY' SUEDE

**LINING:**

NATURAL CALF

**INNER INSOLE:**

COVERED IN NATURAL CALF

**LOGO:**

IN HIGH FREQUENCY

**SOLE:**

MICRO (EXTRALIGHT) BEIGE

**COLOR:**

ENGLISH GREEN

**NUMBERS:**

37-38-39-40-41-42-43-44-44-45-46-47

**LEATHER CARE INSTRUCTIONS:**

DRY CLEANING WITH A SPONGE



### AIR SYSTEM







## LANCILLOTTO LOW - Art. LL257

Exclusive model owned by the company Tobia Longarini. Protected brand worldwide.

### LEATHER:

HIGH QUALITY' SUEDE

### LINING:

NATURAL CALF

### INNER INSOLE:

COVERED IN NATURAL CALF

### HEEL:

HIGH QUALITY PRINTED SUEDE

### LOGO:

IN HIGH FREQUENCY

### SOLE:

MICRO (EXTRALIGHT) WHITE

### COLOR:

BLUE

### NUMBERS:

37-38-39-40-41-42-43-44-44-45-46-47

### LEATHER CARE INSTRUCTIONS:

DRY CLEANING WITH A SPONGE



### AIR SYSTEM





## **LANCILLOTTO LOW - Art. LL258**

Exclusive model owned by the company Tobia Longarini. Protected brand worldwide

### **LEATHER:**

HIGH QUALITY' SUEDE

### **LINING:**

NATURAL CALF

### **INNER INSOLE:**

COVERED IN NATURAL CALF

### **HEEL:**

HIGH QUALITY PRINTED SUEDE

### **LOGO:**

IN HIGH FREQUENCY

### **SOLE:**

MICRO (EXTRALIGHT) WHITE

### **COLOR:**

LIGHT BROWN

### **NUMBERS:**

37-38-39-40-41-42-43-44-44-45-46-47

### **LEATHER CARE INSTRUCTIONS:**

DRY CLEANING WITH A SPONGE



### **AIR SYSTEM**







## LANCILLOTTO LOW MIMETIC - Art. LL255

Exclusive model owned by the company Tobia Longarini. Protected brand worldwide

### LEATHER:

PONY

### LINING:

NATURAL CALF

### INNER INSOLE:

COVERED IN NATURAL CALF

### HEEL:

LAMB BROWN

### LOGO:

IN HIGH FREQUENCY

### SOLE:

MICRO (EXTRALIGHT) BEIGE

### COLOR:

CAMOUFLAGE

### NUMBERS:

37-38-39-40-41-42-43-44-44-45-46-47



### AIR SYSTEM





## **LANCILLOTTO DAKOTA LOW - Art. LL259**

Exclusive model owned by the company Tobia Longarini. Protected brand worldwide.

**LEATHER:**

FIRST CHOICE HALF CALF

**LINING:**

NATURAL LEATHER

**INNER INSOLE:**

COVERED IN NATURAL CALF

**LOGO:**

LASERED ON LEATHER

**SOLE:**

MICRO (EXTRALIGHT) BEIGE

**COLOR:**

BLACK, MUD.

**NUMBERS:**

37-38-39-40-41-42-43-44-44-45-46-47

**LEATHER CARE INSTRUCTIONS:**

IT ABSORBS OINTMENTS AND IT IS BRUSHABLE



**AIR SYSTEM**







## **LANCILLOTTO DAKOTA LOW - Art. LL260**

Exclusive model owned by the company Tobia Longarini. Protected brand worldwide.

**LEATHER:**

FIRST CHOICE HALF CALF

**LINING:**

NATURAL LEATHER

**INNER INSOLE:**

COVERED IN NATURAL CALF

**LOGO:**

LASERED ON LEATHER

**SOLE:**

HIGH QUALITY BROWN RUBBER

**COLOR:**

BLACK, MUD.

**NUMBERS:**

37-38-39-40-41-42-43-44-44-45-46-47

**LEATHER CARE INSTRUCTIONS:**

IT ABSORBS OINTMENTS AND IT IS BRUSHABLE



**AIR SYSTEM**





### **LANCILLOTTO DAKOTA LOW - Art. LL261**

Exclusive model owned by the company Tobia Longarini. Protected brand worldwide.

**LEATHER:**

FIRST CHOICE HALF CALF

**LINING:**

NATURAL LEATHER

**INNER INSOLE:**

COVERED IN NATURAL CALF

**LOGO:**

LASERED ON LEATHER

**SOLE:**

HIGH QUALITY BLACK RUBBER

**COLOR:**

BLACK.

**NUMBERS:**

37-38-39-40-41-42-43-44-44-45-46-47

**LEATHER CARE INSTRUCTIONS:**

IT ABSORBS OINTMENTS AND IT IS BRUSHABLE

**AIR SYSTEM**







## **LIBERTA' - Art. T101**

Exclusive model owned by the company Tobia Longarini. Protected brand worldwide.

**LEATHER:**

FIRST CHOICE CALF (NAPPA LEATHER)

**LACING CUFF:**

SUEDE.

**LINING:**

NATURAL CALF.

**INNER INSOLE:**

COVERED IN NATURAL CALF

**LOGO:**

IN HIGH FREQUENCY

**LACE:**

WAXED.

**SOLE:**

RUBBER.

**COLOR:**

BLACK

**NUMBERS:**

37-38-39-40-41-42-43-44-44-45-46

**LEATHER CARE INSTRUCTIONS:**

IT ABSORBS OINTMENTS AND IT IS BRUSHABLE

**AIR SYSTEM**





## **LIBERTA' - Art. T102TM**

Exclusive model owned by the company Tobia Longarini. Protected brand worldwide.

**LEATHER:**

FIRST CHOICE CALF (NAPPA LEATHER)

**LACING CUFF:**

SUEDE.

**LINING:**

NATURAL CALF.

**INNER INSOLE:**

COVERED IN NATURAL CALF

**LOGO:**

EMBROIDERED

**LACE:**

WAXED.

**SOLE:**

RUBBER.

**COLOR:**

BLACK

**NUMBERS:**

37-38-39-40-41-42-43-44-44-45-46

**LEATHER CARE INSTRUCTIONS:**

IT ABSORBS OINTMENTS AND IT IS BRUSHABLE

### **AIR SYSTEM**







## **LIBERTA' - Art. T100N**

Exclusive model owned by the company Tobia Longarini. Protected brand worldwide.

**LEATHER:**

FIRST CHOICE CALF (NAPPA LEATHER)

**LACING CUFF:**

SUEDE.

**LINING:**

NATURAL CALF.

**INNER INSOLE:**

COVERED IN NATURAL CALF

**LOGO:**

EMBROIDERED.

**LACE:**

WAXED.

**SOLE:**

RUBBER.

**COLOR:**

BLACK

**NUMBERS:**

37-38-39-40-41-42-43-44-44-45-46

**LEATHER CARE INSTRUCTIONS:**

IT ABSORBS OINTMENTS AND IT IS BRUSHABLE

### **AIR SYSTEM**





## **LIBERTA' - Art. T103G**

Exclusive model owned by the company Tobia Longarini. Protected brand worldwide.

**LEATHER:**

FIRST CHOICE CALF (NAPPA LEATHER)

**LACING CUFF:**

SUEDE.

**LINING:**

NATURAL CALF.

**INNER INSOLE:**

COVERED IN NATURAL CALF

**LOGO:**

EMBROIDERED.

**LACE:**

WAXED.

**SOLE:**

RUBBER.

**COLOR:**

GREY

**NUMBERS:**

37-38-39-40-41-42-43-44-44-45-46

**LEATHER CARE INSTRUCTIONS:**

IT ABSORBS OINTMENTS AND IT IS BRUSHABLE

**AIR SYSTEM**







### **LIBERTA' LOW - Art. T110**

Exclusive model owned by the company Tobia Longarini. Protected brand worldwide.

**LEATHER:**

FIRST CHOICE SUEDE

**LACING CUFF:**

SUEDE PRINTED FIRST CHOICE

**LINING:**

NATURAL WHITE CALF.

**INNER INSOLE:**

COVERED IN NATURAL CALF.

**LOGO:**

IN HIGH FREQUENCY WITH REFLECTING SUBLOGO

**SOLE:**

HIGH QUALITY WHITE RUBBER

**COLOR:**

BLUE

**NUMBERS:**

37-38-39-40-41-42-43-44-44-45-46

**LEATHER CARE INSTRUCTIONS:**

DRY CLEANING WITH A SPONGE

#### **AIR SYSTEM**





### **LIBERTA' LOW - Art. T111**

Exclusive model owned by the company Tobia Longarini. Protected brand worldwide.

**LEATHER:**

FIRST CHOICE CALF (NAPPA)

**LACING CUFF AND HEEL:**

FIRST CHOICE PRINTED SUEDE

**LINING:**

NATURAL WHITE CALF.

**INNER INSOLE:**

COVERED IN NATURAL CALF.

**LOGO:**

IN HIGH FREQUENCY WITH REFLECTING SUBLOGO

**SOLE:**

HIGH QUALITY WHITE RUBBER

**COLOR:**

GREY

**NUMBERS:**

37-38-39-40-41-42-43-44-44-45-46

**LEATHER CARE INSTRUCTIONS:**

IT ABSORBS OINTMENTS AND IT IS BRUSHABLE

**AIR SYSTEM**





## **ARTHUR - Art. T197CR**

Exclusive model owned by the company Tobia Longarini. Protected brand worldwide.

**LEATHER:**

PATENT SUEDE

**FRINGE DETAIL:**

FIRST CHOICE SUEDE

**LINING:**

NATURAL CALF.

**INNER INSOLE:**

COVERED IN NATURAL CALF.

**LOGO:**

LASERED ON LEATHER.

**SOLE:**

LEATHER WITH LASERED POETRY.

**COLOR:**

TUNDRA

**NUMBERS:**

37-38-39-40-41-42-43-44-44-45-46-47







## **ARTHUR** - Art. T248TM

Exclusive model owned by the company Tobia Longarini. Protected brand worldwide.

**LEATHER:**

FIRST CHOICE SUEDE

**FRINGE DETAIL:**

PATENT SUEDE

**LINING:**

NATURAL CALF.

**INNER INSOLE:**

COVERED IN NATURAL CALF

**LOGO:**

LASERED ON LEATHER

**SOLE:**

LEATHER WITH LASERED POETRY

**COLOR:**

DARK BROWN

**NUMBERS:**

37-38-39-40-41-42-43-44-44-45-46-47

**LEATHER CARE INSTRUCTIONS:**

DRY CLEANING WITH A SPONGE





## ARTHUR - Art. T190K

Exclusive model owned by the company Tobia Longarini. Protected brand worldwide.

**LEATHER:**

FIRST CHOICE SUEDE

**DIRECTIONS TO THE SKIN CARE:**

THE LEATHER MAKES IT NOT WATERPROOF.

**FRINGE DETAIL:**

MID CALF FIRST CHOICE.

**LINING:**

NATURAL CALF.

**INNER INSOLE:**

COVERED IN NATURAL CALF.

**LOGO:**

LASERED ON LEATHER.

**SOLE:**

LEATHER WITH LASERED POETRY.

**COLOR:**

BLUE

**NUMBERS:**

37-38-39-40-41-42-43-44-44-45-46-47

**LEATHER CARE INSTRUCTIONS:**

DRY CLEANING WITH A SPONGE





## **ARTHUR - Art. T180N**

Exclusive model owned by the company Tobia Longarini. Protected brand worldwide.

**LEATHER:**

FIRST CHOICE HALF CALF

**LINING:**

NATURAL LEATHER

**INNER INSOLE:**

COVERED IN NATURAL CALF

**LOGO:**

LASERED ON LEATHER

**SOLE:**

LEATHER WITH LASERED POETRY.

**COLOR:**

BLACK, MUD.

**NUMBERS:**

37-38-39-40-41-42-43-44-44-45-46-47

**LEATHER CARE INSTRUCTIONS:**

IT ABSORBS OINTMENTS AND IT IS BRUSHABLE







## ARTHUR - Art. T181F

Exclusive model owned by the company Tobia Longarini. Protected brand worldwide.

**LEATHER:**

FIRST CHOICE HALF CALF

**LINING:**

NATURAL LEATHER

**INNER INSOLE:**

COVERED IN NATURAL CALF

**LOGO:**

LASERED ON LEATHER

**SOLE:**

LEATHER WITH LASERED POETRY.

**COLOR:**

BLACK, MUD.

**NUMBERS:**

37-38-39-40-41-42-43-44-44-45-46-47

**LEATHER CARE INSTRUCTIONS:**

IT ABSORBS OINTMENTS AND IT IS BRUSHABLE





## **ARTHUR** - Art. T182P

Exclusive model owned by the company Tobia Longarini. Protected brand worldwide.

**LEATHER:**

FIRST CHOICE SUEDE LINING

**LINING:**

NATURAL CALF

**INNER INSOLE:**

COVERED IN NATURAL CALF

**LOGO:**

LASERED ON THE HEEL

**SOLE:**

LEATHER WITH LASERED POETRY

**COLOR:**

PLUME

**NUMBERS:**

37-38-39-40-41-42-43-44-44-45-46-47

**LEATHER CARE INSTRUCTIONS:**

DRY CLEANING WITH A SPONGE





## ARTHUR - Art. T183V

Exclusive model owned by the company Tobia Longarini. Protected brand worldwide.

### LEATHER:

FIRST CHOICE PRINTED SUEDE

### LINING:

NATURAL CALF

### INNER INSOLE:

COVERED IN NATURAL CALF

### LOGO:

LASERED ON THE HEEL

### SOLE:

LEATHER WITH LASERED POETRY

### COLOR:

BLUE

### NUMBERS:

37-38-39-40-41-42-43-44-44-45-46-47

### LEATHER CARE INSTRUCTIONS:

DRY CLEANING WITH A SPONGE







## **ARTHUR** - Art. T198CR

Exclusive model owned by the company Tobia Longarini. Protected brand worldwide.

**LEATHER:**

PATENT SUEDE

**LINING:**

NATURAL CALF

**FRINGE DETAIL:**

FIRST CHOICE SUEDE

**INNER INSOLE:**

COVERED IN NATURAL CALF

**LOGO:**

LASERED ON THE HEEL

**SOLE:**

LEATHER WITH LASERED POETRY

**COLOR:**

TUNDRA

**NUMBERS:**

37-38-39-40-41-42-43-44-44-45-46-47





## **ARTHUR** - Art. T191V

Exclusive model owned by the company Tobia Longarini. Protected brand worldwide.

**LEATHER:**

FIRST CHOICE SUEDE LINING

**LINING:**

NATURAL CALF

**FRINGE, DETAIL:**

FIRST CHOICE SUEDE

**INNER INSOLE:**

COVERED IN NATURAL CALF

**LOGO:**

LASERED ON THE HEEL

**SOLE:**

LEATHER WITH LASERED POETRY

**COLOR:**

BURGUNDY

**NUMBERS:**

37-38-39-40-41-42-43-44-44-45-46-47





## **ARTHUR - Art. T192K**

Exclusive model owned by the company Tobia Longarini. Protected brand worldwide.

**LEATHER:**

FIRST CHOICE PRINTED SUEDE

**LINING:**

NATURAL CALF

**FRINGE DETAIL:**

PATENT SUEDE

**INNER INSOLE:**

COVERED IN NATURAL CALF

**LOGO:**

LASERED ON THE HEEL

**SOLE:**

LEATHER WITH LASERED POETRY

**COLOR:**

BURGUNDY

**NUMBERS:**

37-38-39-40-41-42-43-44-44-45-46-47

**LEATHER CARE INSTRUCTIONS:**

DRY CLEANING WITH A SPONGE







## **ARTHUR** - Art. T193V

Exclusive model owned by the company Tobia Longarini. Protected brand worldwide.

**LEATHER:**

FIRST CHOICE PRINTED SUEDE

**LINING:**

NATURAL CALF

**FRINGE DETAIL:**

FIRST CHOICE SUEDE

**INNER INSOLE:**

COVERED IN NATURAL CALF

**LOGO:**

LASERED ON THE HEEL

**SOLE:**

LEATHER WITH LASERED POETRY

**COLOR:**

BLUE

**NUMBERS:**

37-38-39-40-41-42-43-44-44-45-46-47





## **ARTHUR** - Art. T194CR

Exclusive model owned by the company Tobia Longarini. Protected brand worldwide.

**LEATHER:**

PATENT SUEDE

**LINING:**

NATURAL CALF

**FRINGE DETAIL:**

FIRST CHOICE SUEDE

**INNER INSOLE:**

COVERED IN NATURAL CALF

**LOGO:**

LASERED ON THE HEEL

**SOLE:**

LEATHER WITH LASERED POETRY

**COLOR:**

BURGUNDY

**NUMBERS:**

37-38-39-40-41-42-43-44-44-45-46-47





## **ARTHUR** - Art. T195CR

Exclusive model owned by the company Tobia Longarini. Protected brand worldwide.

**LEATHER:**

PATENT SUEDE

**LINING:**

NATURAL CALF

**FRINGE DETAIL:**

FIRST CHOICE SUEDE

**INNER INSOLE:**

COVERED IN NATURAL CALF

**LOGO:**

LASERED ON THE HEEL

**SOLE:**

LEATHER WITH LASERED POETRY

**COLOR:**

BLUE

**NUMBERS:**

37-38-39-40-41-42-43-44-44-45-46-47







## ARTHUR - Art. T196V

Exclusive model owned by the company Tobia Longarini. Protected brand worldwide.

### LEATHER:

FIRST CHOICE PRINTED SUEDE

### LINING:

NATURAL CALF

### FRINGE DETAIL:

FIRST CHOICE SUEDE

### INNER INSOLE:

COVERED IN NATURAL CALF

### LOGO:

LASERED ON THE HEEL

### SOLE:

LEATHER WITH LASERED POETRY

### COLOR:

MUD

### NUMBERS:

37-38-39-40-41-42-43-44-44-45-46-47





## **ARTHUR** - Art. T300

Exclusive model owned by the company Tobia Longarini. Protected brand worldwide.

**LEATHER:**

MID CALF

**LINING:**

NATURAL CALF

**FRINGE:**

REVERSED

**FRINGE CLIP:**

SUEDE PRINTED

**INNER INSOLE:**

COVERED IN NATURAL CALF

**LOGO:**

IN HIGH FREQUENCY ON THE HEEL SOLE

**SOLE:**

MICRO (EXTRALIGHT) BEIGE

**COLOR:**

FANGO

**NUMBERS:**

37-38-39-40-41-42-43-44-44-45-46-47

**LEATHER CARE INSTRUCTIONS:**

IT ABSORBS OINTMENTS AND IT IS BRUSHABLE





## **ARTHUR - Art. T301**

Exclusive model owned by the company Tobia Longarini. Protected brand worldwide.

**LEATHER:**

FIRST CHOICE SUEDE

**LINING:**

NATURAL CALF

**FRINGE:**

REVERSED

**FRINGE CLIP:**

SUEDE PRINTED

**INNER INSOLE:**

COVERED IN NATURAL CALF

**LOGO:**

IN HIGH FREQUENCY ON THE HEEL SOLE

**SOLE:**

MICRO (EXTRALIGHT) WHITE

**COLOR:**

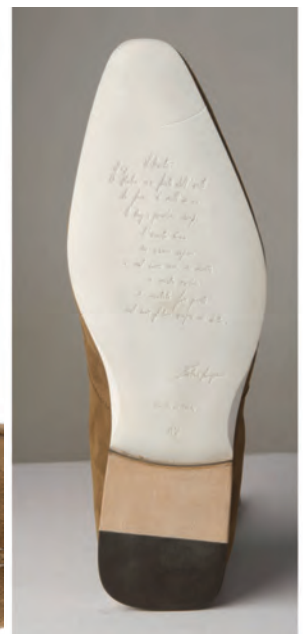
LIGHT BROWN

**NUMBERS:**

37-38-39-40-41-42-43-44-44-45-46-47

**LEATHER CARE INSTRUCTIONS:**

DRY CLEANING WITH A SPONGE







## **ARTHUR** - Art. T302

Exclusive model owned by the company Tobia Longarini. Protected brand worldwide.

**LEATHER:**

FIRST CHOICE SUEDE

**LINING:**

NATURAL CALF

**FRINGE:**

REVERSED PRINTED SUEDE

**FRINGE CLIP:**

PRINTED SUEDE

**INNER INSOLE:**

COVERED IN NATURAL CALF

**LOGO:**

IN HIGH FREQUENCY ON THE HEEL

**SOLE:**

MICRO (EXTRALIGHT) WHITE

**COLOR:**

BLUE

**NUMBERS:**

37-38-39-40-41-42-43-44-44-45-46-47

**LEATHER CARE INSTRUCTIONS:**

DRY CLEANING WITH A SPONGE



### **EARTH** - Art. E601

Exclusive model owned by Longarini company registered trademark.

**HIDES:**

CALF

**COVER:**

NATURAL CALF (BEIGE)

**EXTREMITY AND HEEL:**

PREMIUM QUALITY SUEDE

**BOTTOM:**

MICRO WHITE (EXTRALIGHT) WITH LASERED POEM

**TIE:**

WAXED BLUE

**INSOLE:**

LEATHER COVERED WITH NATURAL CALF

**LOGO:**

HIGH FREQUENCY ON THE HEEL

**COLOR RANGE:**

PARADISE BLUE

**NUMBERS:**

37-38-39-40-41-42-43-44-44-45-46-47





## ***EARTH*** - Art. E602

Exclusive model owned by Longarini company registered trademark.

**HIDES:**

CALF

**COVER:**

NATURAL CALF (BEIGE)

**EXTREMITY AND HEEL:**

CALF

**BOTTOM:**

MICRO BEIGE (EXTRALIGHT) WITH LASERED POEM

**TIE:**

WAXED DARK BROWN

**INSOLE:**

LEATHER COVERED WITH NATURAL CALF

**LOGO:**

HIGH FREQUENCY ON THE HEEL

**COLOR RANGE:**

DARK BROWN

**NUMBERS:**

37-38-39-40-41-42-43-44-44-45-46-47







### **EARTH** - Art. E603C

Exclusive model owned by Longarini company registered trademark.

**HIDES:**

PREMIUM QUALITY PRINTED GOAT

**COVER:**

NATURAL CALF (BEIGE)

**EXTREMITY AND HEEL:**

CRYSTAL BLUE

**BOTTOM:**

ITALIAN LEATHER WITH LASERED POEM

**TIE:**

WAXED BLUE

**INSOLE:**

LEATHER COVERED WITH NATURAL CALF

**LOGO:**

HIGH FREQUENCY ON THE HEEL

**COLOR RANGE:**

BLUE

**NUMBERS:**

37-38-39-40-41-42-43-44-44-45-46-47





### **EARTH** - Art. E604

Exclusive model owned by Longarini company registered trademark.

**HIDES:**

CALF

**COVER:**

NATURAL CALF (BEIGE)

**EXTREMITY AND HEEL:**

CALF

**BOTTOM:**

MICRO WHITE (EXTRALIGHT) WITH LASERED POEM

**TIE:**

WAXED BLUE

**INSOLE:**

LEATHER COVERED WITH NATURAL CALF

**LOGO:**

HIGH FREQUENCY ON THE HEEL

**COLOR RANGE:**

PARADISE BLUE

**NUMBERS:**

37-38-39-40-41-42-43-44-44-45-46-47







### ***EARTH*** - Art. E605

Exclusive model owned by Longarini company registered trademark.

**HIDES:**

PREMIUM QUALITY CALF

**COVER:**

NATURAL CALF (BEIGE)

**EXTREMITY AND HEEL:**

PREMIUM QUALITY BLACK SUEDE

**BOTTOM:**

MICRO WHITE (EXTRALIGHT) WITH LASERED POEM

**TIE:**

WAXED BLACK

**INSOLE:**

LEATHER COVERED WITH NATURAL CALF

**LOGO:**

HIGH FREQUENCY ON THE HEEL

**COLOR RANGE:**

BLACK

**NUMBERS:**

37-38-39-40-41-42-43-44-44-45-46-47







## **LIBERTA' - Art. T100F LADY GRAPS**

Exclusive model owned by the company Tobia Longarini. Protected brand worldwide.

### **LEATHER:**

FIRST CHOICE CALF (NAPPA LEATHER)

### **LACING CUFF:**

FIRST CHOICE FUCHSIA SUEDE

### **LINING:**

NATURAL CALF.

### **INNER INSOLE:**

COVERED IN NATURAL CALF

### **LOGO:**

EMBROIDERED.

### **LACE:**

WAXED.

### **SOLE:**

RUBBER

### **NUMBERS:**

37-38-39-40-41-42-43-44-44-45-46-47

### **LEATHER CARE INSTRUCTIONS:**

IT ABSORBS OINTMENTS AND IT IS BRUSHABLE

### **AIR SYSTEM**





## **LIBERTA' - Art. T101 PLUM**

Exclusive model owned by the company Tobia Longarini. Protected brand worldwide.

### **LEATHER:**

FIRST CHOICE CALF (NAPPA LEATHER)

### **LACING CUFF:**

BURGUNDY PATENT SUEDE

### **LINING:**

NATURAL CALF

### **INNER INSOLE:**

COVERED IN NATURAL CALF

### **LOGO:**

EMBROIDERED.

### **LACE:**

WAXED.

### **SOLE:**

RUBBER

### **NUMBERS:**

37-38-39-40-41-42-43-44-44-45-46-47

### **LEATHER CARE INSTRUCTIONS:**

IT ABSORBS OINTMENTS AND IT IS SCRUBBABLE

### **AIR SYSTEM**





## **LIBERTA' - Art. T105B**

Exclusive model owned by the company Tobia Longarini. Protected brand worldwide.

**LEATHER:**

FIRST CHOICE CALF (NAPPA LEATHER)

**LACING CUFF:**

FIRST CHOICE BLUE SUEDE

**LINING:**

CALF NATURAL WHITE

**INNER INSOLE:**

COVERED IN NATURAL CALF

**LOGO:**

EMBROIDERED.

**SOLE:**

HIGH QUALITY WHITE RUBBER

**COLOR:**

BLUE

**NUMBERS:**

37-38-39-40-41-42-43-44-44-45-46-47

**LEATHER CARE INSTRUCTIONS:**

IT ABSORBS OINTMENTS AND IT IS BRUSHABLE

**AIR SYSTEM**







## **LIBERTA' - Art. T106V**

Exclusive model owned by the company Tobia Longarini. Protected brand worldwide.

**LEATHER:**

PRINTED SUEDE

**LACING CUFF:**

FIRST CHOICE SUEDE BLUE

**LINING:**

CALF NATURAL WHITE

**INNER INSOLE:**

COVERED IN NATURAL CALF

**LOGO:**

EMBROIDERED.

**SOLE:**

HIGH QUALITY WHITE RUBBER

**COLOR:**

BLUE

**NUMBERS:**

37-38-39-40-41-42-43-44-44-45-46-47

### **AIR SYSTEM**





### **LIBERTA' - Art. T104F**

Exclusive model owned by the company Tobia Longarini. Protected brand worldwide.

**LEATHER:**

FIRST CHOICE CALF (NAPPA LEATHER)

**LACING CUFF:**

FIRST CHOICE FUCHSIA SUEDE

**LINING:**

CALF NATURAL WHITE

**INNER INSOLE:**

COVERED IN NATURAL CALF

**LOGO:**

EMBROIDERED WITH SWAROVSKI

**SOLE:**

HIGH QUALITY WHITE RUBBER

**COLOR:**

FUCHSIA

**NUMBERS:**

37-38-39-40-41-42-43-44-44-45-46-47

**LEATHER CARE INSTRUCTIONS:**

IT ABSORBS OINTMENTS AND IT IS BRUSHABLE

#### **AIR SYSTEM**





### **STEFANY** - Art. S400

Exclusive model owned by the company Tobia Longarini. Protected brand worldwide.

**LEATHER:**

FIRST CHOICE PRINTED SUEDE

**LINING:**

NATURAL BEIGE CALF

**INSOLE:**

IN NATURAL CALF

**SOLE:**

LEATHER

**HEEL:**

9 NUBUCK

**BUCKLE:**

WITH ORIGINAL SWAROVSKI

**COLOR:**

MUD

**NUMBERS:**

36-37-38-39-40-41

OPENING WITH ELASTIC CLIP







### **STEFANY** - Art. S401

Exclusive model owned by the company Tobia Longarini. Protected brand worldwide.

**LEATHER:**

FIRST CHOICE PRINTED SUEDE

**LINING:**

NATURAL BEIGE CALF

**INSOLE:**

IN NATURAL CALF

**SOLE:**

LEATHER

**HEEL:**

9 NUBUCK

**BUCKLE:**

WITH ORIGINAL SWAROVSKI

**COLOR:**

BLUE

**NUMBERS:**

36-37-38-39-40-41





### **STEFANY** - Art. S402

Exclusive model owned by Longarini company registered trademark.

**HIDES:**

PREMIUM QUALITY PRINTED SUEDE

**COVER:**

NATURAL CALF (BEIGE)

**INSOLE:**

NATURAL CALF

**BOTTOM:**

LEATHER

**HEEL:**

9 CIGARETTE NABUK

**BUCKLE:**

WITH ORIGINAL SWAROWSKI

**COLOR:**

MUD

**NUMBERS:**

36-37-38-39-40-41

CLIP OPENING





### **STEFANY** - Art. S403

Exclusive model owned by Longarini company registered trademark.

**HIDES:**

PREMIUM QUALITY PRINTED SUEDE

**COVER:**

NATURAL CALF (BEIGE)

**INSOLE:**

NATURAL CALF

**BOTTOM:**

LEATHER

**HEEL:**

9 CIGARETTE NABUK

**BUCKLE:**

WITH ORIGINAL SWAROWSKI

**COLOR:**

BLUE

**NUMBERS:**

36-37-38-39-40-41







### **ISIDE - Art. I500**

Exclusive model owned by Longarini company registered trademark.

**HIDES:**

REFLECTING CALF

**COVER:**

CALF

**INSOLE:**

NATURAL CALF

**BOTTOM:**

NAPPA LEATHER

**HEEL:**

9 NABUK

**PIN UNDER INSOLE:**

WITH ORIGINAL SWAROWSKI

**COLOR:**

REFLECTING - GOLD

**NUMBERS:**

36-37-38-39-40-41





### **ISIDE** - Art. I500

Exclusive model owned by Longarini company registered trademark.

**HIDES:**

REFLECTING CALF

**COVER:**

CALF

**INSOLE:**

NATURAL CALF

**BOTTOM:**

NAPPA LEATHER

**HEEL:**

9 NABUK

**PIN UNDER INSOLE:**

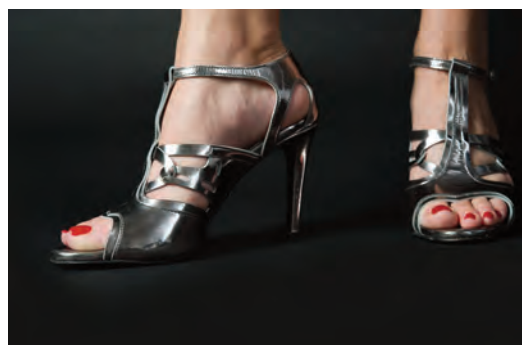
WITH ORIGINAL SWAROWSKI

**COLOR:**

REFLECTING - PLATINUM

**NUMBERS:**

36-37-38-39-40-41





## **LEATHER CELL PHONE HOLDER HAND MADE - Art. PH01**

Exclusive model owned by Longarini company registered trademark.

Skin useful handmade accessories in leather handmade. Ergonomic shape and softness of the skin let you wear it throughout the day and for any activities you play... sitting in the office, in your car or when you go jogging...

### **LEATHER:**

FIRST CHOICE HALF CALF

### **LINING:**

NATURAL LEATHER

### **DIMENSIONS:**

CM. 16 X 8,5 X 1,4.

### **FEATURES:**

ERGONOMIC WITH BELT LOOP.

HOLES FOR EARPHONES ATTACK AND CHARGER.

### **LOGO:**

RICAMATO

### **COLORS:**

BLACK O CUSTOMIZABLE

### **LEATHER CARE INSTRUCTIONS:**

IT ABSORBS OINTMENTS AND IT IS BRUSHABLE







## **LEATHER CELL PHONE HOLDER HAND MADE - Art. PH02**

Exclusive model owned by Longarini company registered trademark.

Skin useful handmade accessories in leather handmade. Ergonomic shape and softness of the skin let you wear it throughout the day and for any activities you play... sitting in the office, in your car or when you go jogging...

### **LEATHER:**

FIRST CHOICE HALF CALF

### **LINING:**

NATURAL LEATHER

### **DIMENSIONS:**

CM. 16 X 8,5 X 1,4.

### **FEATURES:**

ERGONOMIC WITH BELT LOOP.

HOLES FOR EARPHONES ATTACK AND CHARGER.

### **LOGO:**

HIGH FREQUENCY

### **COLORS:**


BLACK O CUSTOMIZABLE

### **LEATHER CARE INSTRUCTIONS:**

IT ABSORBS OINTMENTS AND IT IS BRUSHABLE







[www.tobialongarini.com](http://www.tobialongarini.com)  
[info@tobialongarini.com](mailto:info@tobialongarini.com)